

Adsorptive Apheresis Monitor

Adamonitor SC

WEEE Dismantle

Instructions

MSCV-1-W-2



TABLE OF CONTENTS

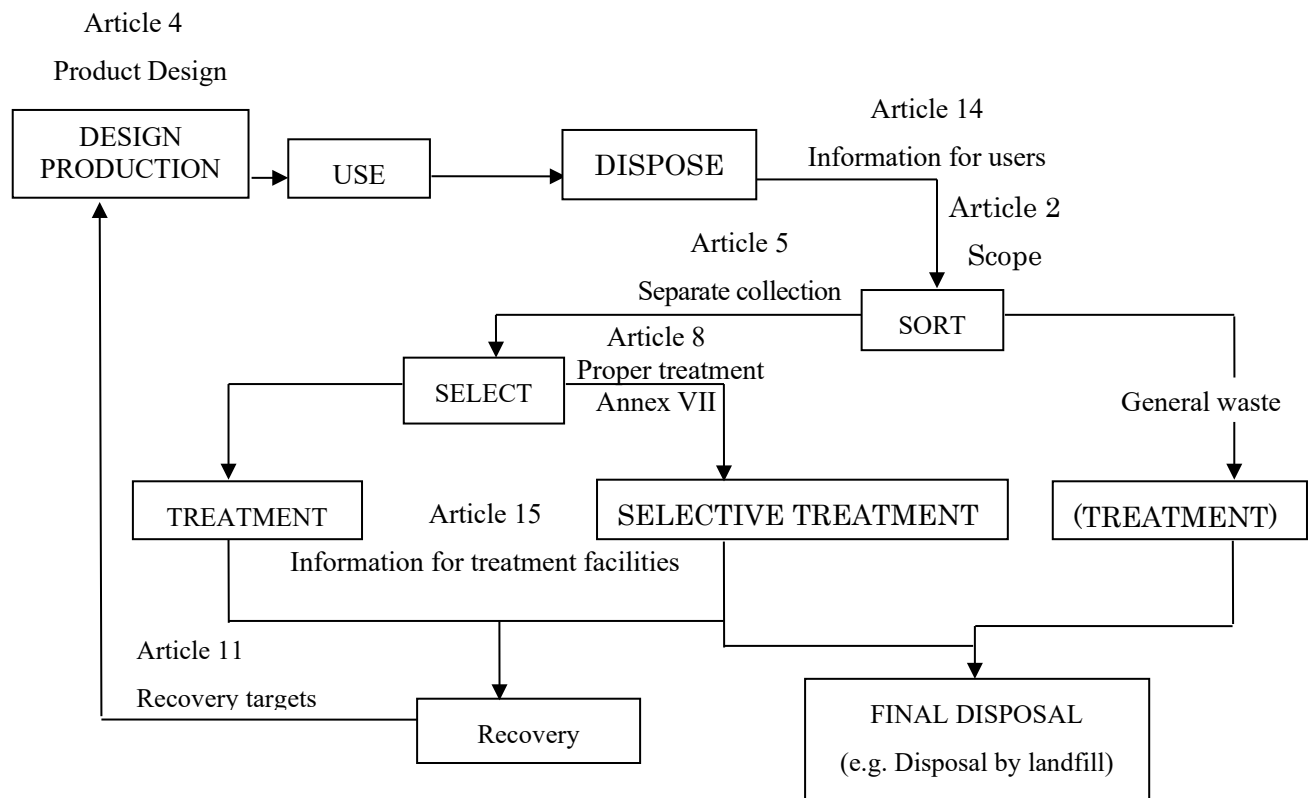
1.Overview	2
Purpose	2
Scope	3
Safety	3
Safe handling practices	4
Accidental exposure	4
Special instructions	5
Support Document	5
Disclaimers	5
2.Instructions dismantling/destruction of Adamonitor SC	6
Section 1: Preparation (cautions regarding contamination)	6
Section 2: Exterior covers, power supply section, and circuit boards removal	8
Section 3: Electronic components and wiring removal	15
3.Instructions dismantling/destruction of Adastand	19
Section 1: Preparation (cautions regarding contamination)	19
Section 2: Parts removal	20

1.Overview

Purpose

The EU WEEE Directive requirements include that all manufactures must have published documentation for the dismantling and segregation of Environmental Hazardous Substances. These instructions are required to be accessible by third parties in order to separate and contain these substances. This document provides information on instrument characteristics relevant for the end of life cycle.

Article Relations with WEEE Directive



1.Overview (continued)

Scope This instruction describes the dismantling and safety requirements for performing the dismantling/destruction of 【Adsorptive Apheresis Monitor Adamonitor SC】 and 【Adastand】. This instruction also includes information on potentially contaminated parts and cautions on handling such parts.

Safety All instruments and miscellaneous items internally in contact with human blood samples and controls are potentially biohazardous. **All the personnel involved in the handling of these materials must at a minimum: wear protective clothing and protective equipment (e.g. disposal protective gloves, safety glasses). These precautions must be followed whenever handling contaminated or potentially contaminated instruments.**

CAUTION!

Use care when performing decontamination and system dismantling to avoid cuts and scrapes from sharp edges, broken glass, or sharps.

Safe handling practices

- While working with potentially contaminated instruments:

1. Do not eat, drink, smoke, apply cosmetics or lip balm, or handle contact lenses.
2. Avoid touching your face. Even you are wearing gloves, touching your eyes, nose, mouth, or personal protective equipment may cause contamination.
3. Protect any open wounds/cuts with bandages. Ensure that the gloves and lab coat (or protective covering) are covering any exposed skin on your arms. Check gloves for defects or holes before putting them on.
4. Remove dirt from the exterior covers, power supply section, printed circuit boards, electronic components, wires, information processing section, and etc. by wiping such as with a cloth dampened with alcohol . If a printed circuit board (PCB) exhibits signs of possible blood contamination and/or saline exposure, spray appropriate disinfectant solution on it prior to handling.
5. Verify that the unit's power cable is removed from the power board.
6. After dismantling is complete, ensure that all PCBs are extracted from unit and chassis.
7. Discard PCBs in accordance with local regulations.
8. Discard the battery in accordance with local regulations.

Accidental exposure

- These systems are not screened for blood borne pathogens.
- Persons exposed to biohazardous or potentially biohazardous materials should take steps immediately to clean the affected area:
 1. Eyes – rinse with water for 15 minutes.
 2. Mouth – rinse with water.
 3. Skin – wash the affected area with soap and water. Apply an antiseptic such as alcohol, povidone, iodine, chlorhexidine, etc.

NOTE: If you are exposed, seek medical assistance as necessary and follow your company's incident reporting procedures as necessary.

1.Overview (continued)

Special instructions • **ENSURE THAT THE INSTRUMENT IS DECONTAMINATED BEFORE DISMANTLE.**

- Pictures in this procedure may not represent all revisions of subassemblies or piece parts that may be found on returned instruments.
- Locations of parts on the instrument are denoted with an (x/y/z) format. Refer to the table below.

X	Y	Z
(F)RONT	(T)OP	(R)IGHT
(M)IDDLE	(M)IDDLE	(M)IDDLE
(R)EAR	(B)OTTOM	(L)EFT

Example: If a part location is designated as “F/T/L”, it can be found on the Front/Top/Left of the instrument.

Support Document WEEE DIRECTIVE 2012/19/EU

Disclaimers

- “All contents of this instruction are only for explaining the dismantling process based on WEEE Directive and shall not be used for maintenance.”
- A copyright for and the instruction manual for this product belongs to Otsuka Electronics Co., Ltd. Regardless of whether partially or wholly, it is copyright infringement to copy, modify or reprint any contents of the instruction manual without consultation with Otsuka Electronics Co., Ltd.

2. Instructions dismantling/destruction of Adamonitor SC

Section 1: Preparation (cautions regarding contamination)

Overview

Section 1 provides the cautions regarding contamination.

WARNING: VERIFY THAT THE INSTRUMENT IS DECONTAMINATED BEFORE DISMANTLE.

If the instrument is not, or may not be decontaminated, follow the cautions in Section 1 when dismantling it.

CAUTION: Dispose of contaminated or potentially contaminated parts or deal with them at appropriate and dedicated facilities in accordance with local regulations.

CAUTION: Use care when performing decontamination and system dismantling to avoid cuts and scrapes from sharp edges, broken glass, or sharps.

2. Instructions dismantling/destruction of Adamonitor SC (continued)

Section 1: Preparation (cautions regarding contamination) (continued)

« Cautions regarding contamination »

- When dismantling potentially contaminated instruments, follow the cautions listed below:
 1. Do not eat, drink, smoke, apply cosmetics or lip balm, or handle contact lenses.
 2. Avoid touching your face. Even you are wearing gloves, touching your eyes, nose, mouth, or personal protective equipment may cause contamination.
 3. Protect any open wounds/cuts with bandages. Ensure that the gloves and lab coat (or protective covering) are covering any exposed skin on your arms. Check gloves for defects or holes before putting them on.
 4. Remove dirt from the exterior covers, power supply section, printed circuit boards, electronic components, wires, information processing section, and etc. by wiping such as with a cloth dampened with alcohol. If a printed circuit board (PCB) exhibits signs of possible blood contamination and/or saline exposure, spray appropriate disinfectant solution on it prior to handling.
 5. Verify that the unit's power cable is removed from the power board.
 6. After dismantling is complete, ensure that all PCBs are extracted from unit and chassis.
 7. Discard PCBs in accordance with local regulations.
 8. Discard the battery in accordance with local regulations.

(CAUTION) The potentially contaminated parts are enclosed in a red box in Sections 2 and 3.

When handling a contaminated or potentially contaminate part, follow the above listed cautions.

2. Instructions dismantling/destruction of Adamonitor SC (continued)

Section 2: Exterior covers, power supply section, and circuit boards removal

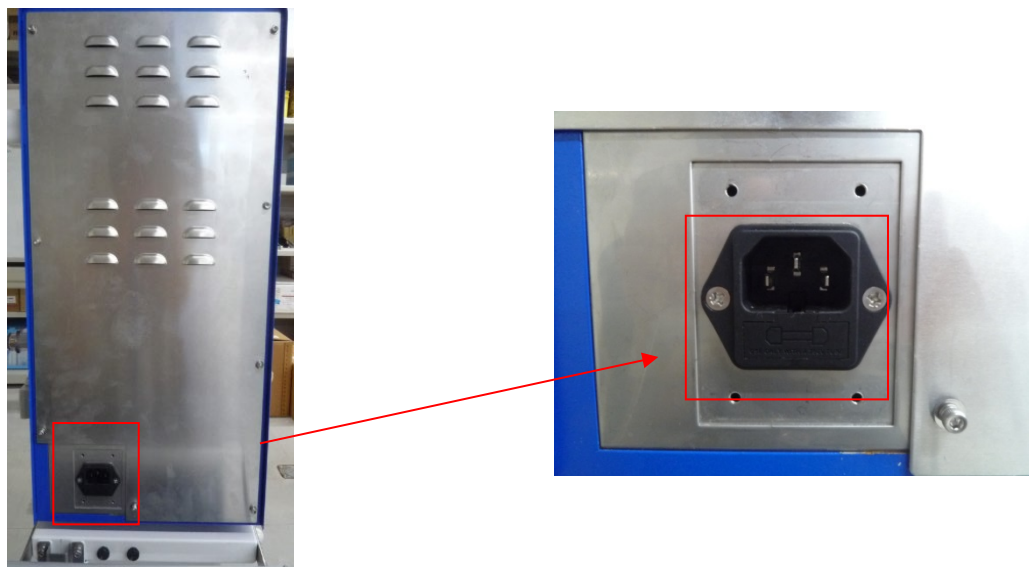
Overview Section 2 provides instructions for removing components/subassemblies listed below. The pictures in this section are to identify the locations where the components/subassemblies to be removed may be found.

- Section 2: Exterior covers, power supply section, and circuit boards removal:
 - Exterior covers removal;
 - Power supply section removal; and
 - Circuit boards removal.

CAUTION: After removing the exterior covers, power supply section, and circuit boards , dispose it or deal with it at an appropriate and dedicated facility in accordance with local regulations

《Exterior covers removal》

2-1-1 Disconnect the AC cable from the AC inlet.



2-1-2 Remove all the exterior covers.



«Power supply section removal»

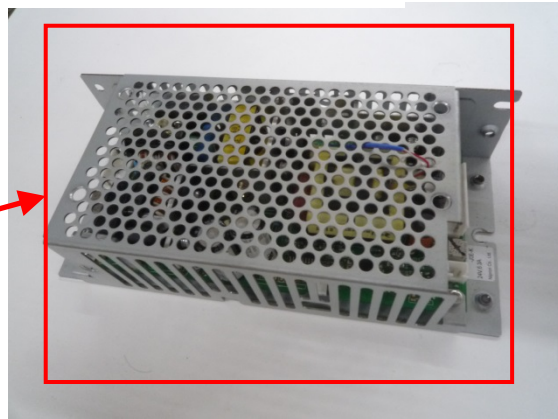
2-2-1 Disconnect all the wiring from the power supply section (main power switch, noise filter, and switching power supply).

2-2-2 Remove the noise filter.

2-2-3 Remove the switching power supply.



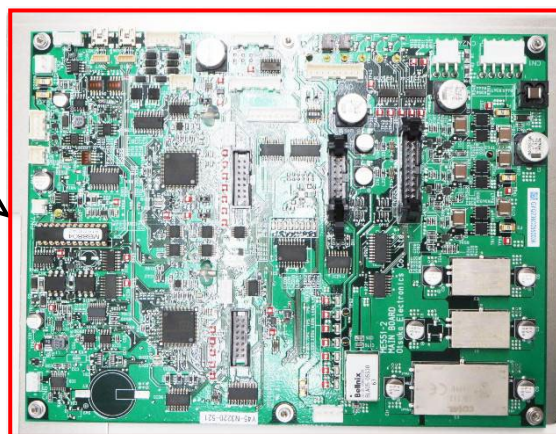
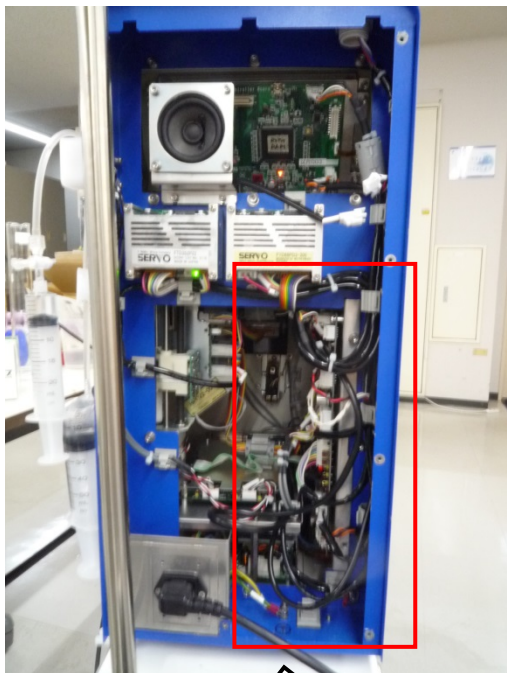
2-2-2 Noise filter (R/B/R).



2-2-3 Switching power supply (R/B/M).

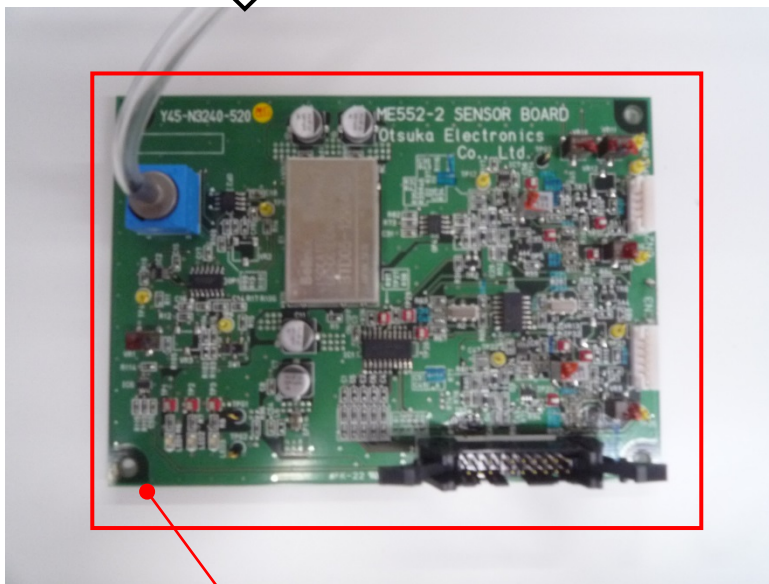
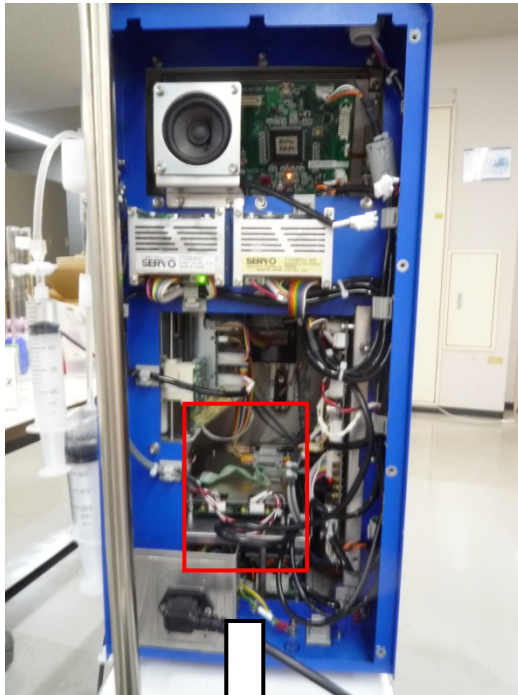
«Circuit boards removal»

2-3-1 Remove the circuit board ME551.



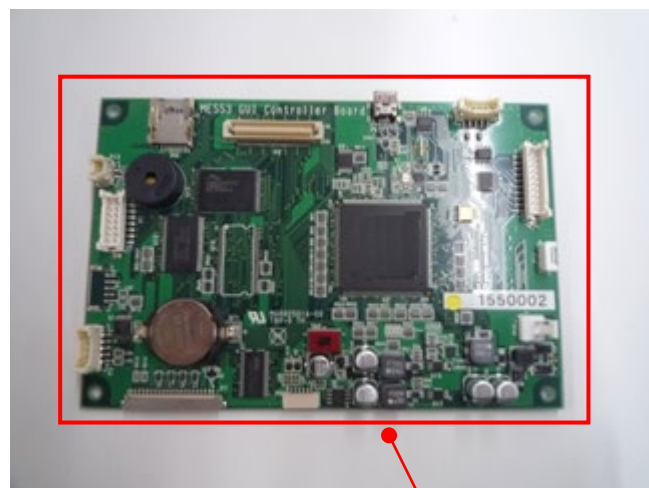
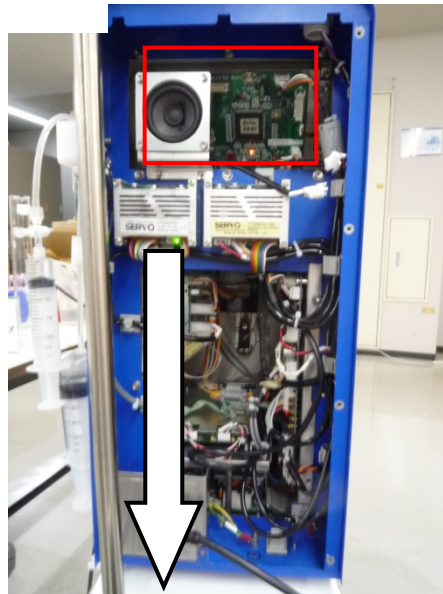
2-3-1 Circuit board ME551 (R/M/L).

2-3-2 Remove the circuit board ME552.



2-3-2 Circuit board ME552 (R/B/M).

2-3-3 Remove the circuit board ME553.



2-3-3 Circuit board ME553 (R/T/M).

2. Instructions dismantling/destruction of Adamonitor SC (continued)

Section 3: Electronic components and wiring removal

Overview Section 3 provides instructions for removing all the electronic components and wiring. The pictures in this section are to identify the locations where the electronic components and wiring to be removed may be found.

- Section 3: Electronic components and wiring removal:
 - Electronic components removal;
 - Wiring removal.

NOTE: After removing all the electronic components and wiring, remove all the remaining harnesses, cables, wiring, and connectors from the individual components.

CAUTION: After removing all the electronic components and wiring, dispose it or deal with it at an appropriate and dedicated facility in accordance with local regulations.

«Electronic components removal»

3-1 Disconnect all the wiring from all the electronic components.

3-2 Remove the Power supply switch.

3-3 Remove the Speaker.

3-4 Remove All Ferrites.



3-2 Power supply switch (R/B/L).



3-3 Speaker (R/T/M).



3-4 Ferrite (R/T/L).

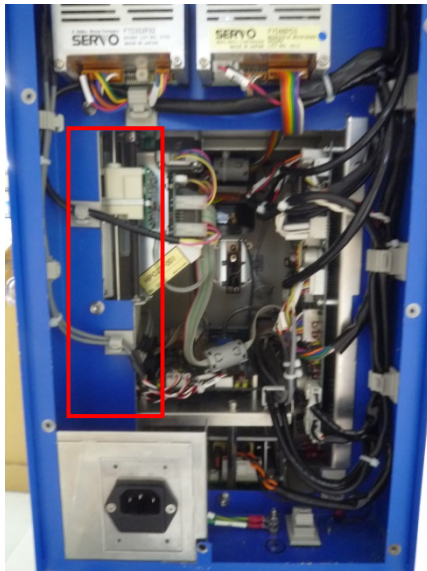
3-5 Remove the Syringe pump unit.

3-6 Remove the Ultrasonic sensor.

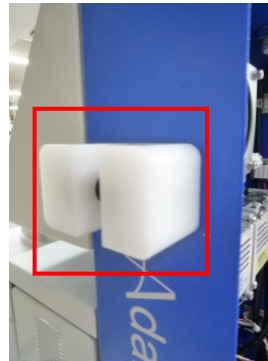
3-7 Remove the Limited switch.

3-8 Remove the Solenoid.

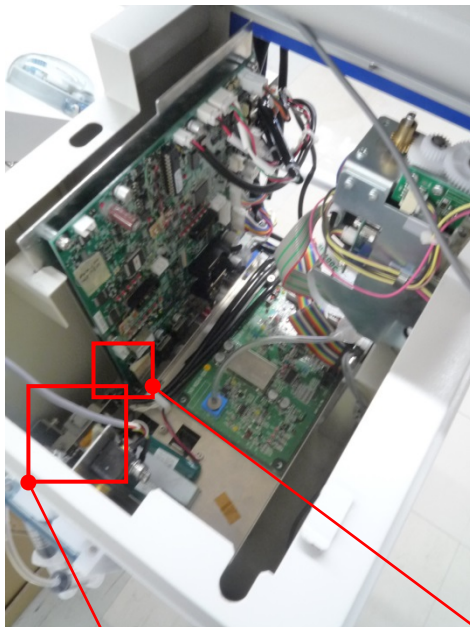
3-9 Remove the Micro switch.



3-5 Syringe pump unit (R/M/R).

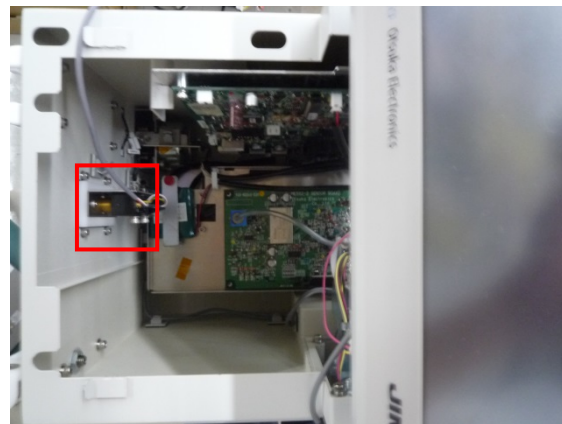


3-6 Ultrasonic sensor (R/T/R).



3-8 Solenoid (F/B/L).

3-9 Micro switch (F/B/L).



3-7 Limited switch (F/M/M).

3-10 Remove the Touch panel.

3-11 Remove the Blood pump unit.

3-12 Remove the LED pilot light.

3-13 Remove the Motor driver.

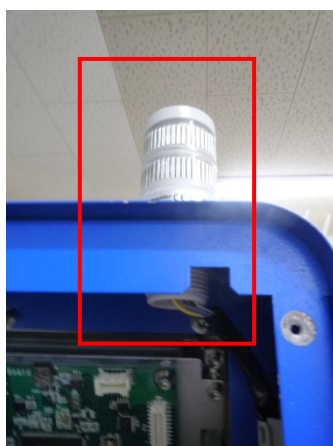
3-14 After dismantling, check that all the circuit boards, components, and wiring are removed from the instrument.



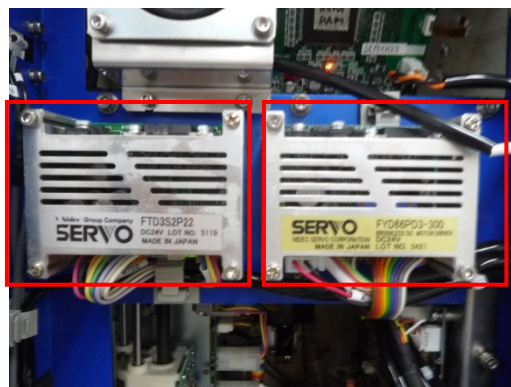
3-10 Touch panel (R/T/M).



3-11 Blood pump unit (F/M/M).



3-12 LED pilot light (R/T/L).



3-13 Motor driver (R/M/M).

3. Instructions dismantling/destruction of Adastand

Section 1: Preparation (cautions regarding contamination)

WARNING: VERIFY THAT THE INSTRUMENT IS DECONTAMINATED BEFORE DISMANTLE.

If the instrument is not, or may not be decontaminated, follow the cautions in Section 1 when dismantling it.

CAUTION: Dispose of contaminated or potentially contaminated parts or deal with them at appropriate and dedicated facilities in accordance with local regulations.

CAUTION: Use care when performing decontamination and system dismantling to avoid cuts and scrapes from sharp edges, broken glass, or sharps.

« Cautions regarding contamination »

- When dismantling potentially contaminated instruments, follow the cautions listed below:
 1. Do not eat, drink, smoke, apply cosmetics or lip balm, or handle contact lenses.
 2. Avoid touching your face. Even you are wearing gloves, touching your eyes, nose, mouth, or personal protective equipment may cause contamination.
 3. Protect any open wounds/cuts with bandages. Ensure that the gloves and lab coat (or protective covering) are covering any exposed skin on your arms. Check gloves for defects or holes before putting them on.
 4. Remove dirt from the exterior covers, power supply section, printed circuit boards, electronic components, wires, information processing section, and etc. by wiping such as with a cloth dampened with alcohol. If a printed circuit board (PCB) exhibits signs of possible blood contamination and/or saline exposure, spray appropriate disinfectant solution on it prior to handling.

3. Instructions dismantling/destruction of Adastand (continued)

Section 2: Parts removal

Overview

Section 2 provides instructions for removing components/subassemblies listed below. The pictures in this section are to identify the locations where the components/subassemblies to be removed may be found.

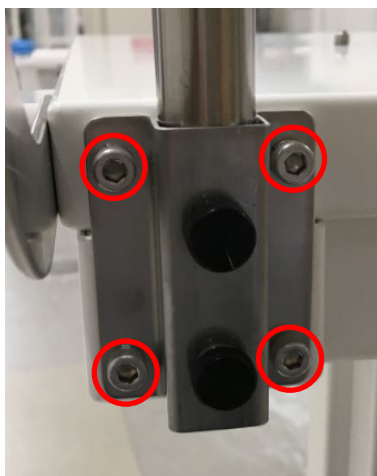
- Section 2: Parts removal:

- Pole
- Handle
- Tube Clamps
- Drawer
- Tube Holder
- Castor

CAUTION: After removing the Parts, dispose it or deal with it at an appropriate and dedicated facility in accordance with local regulations

《Parts removal》

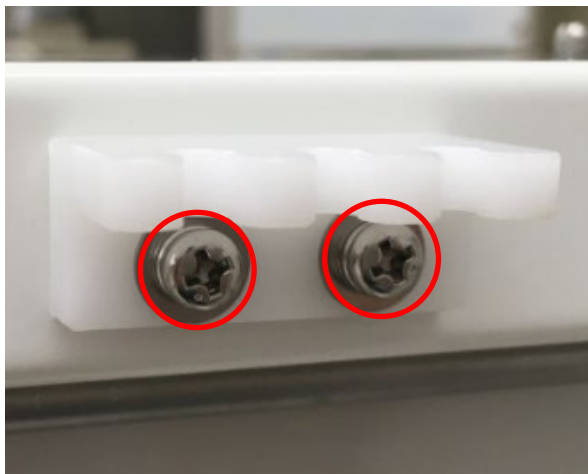
2-1 Remove the Pole



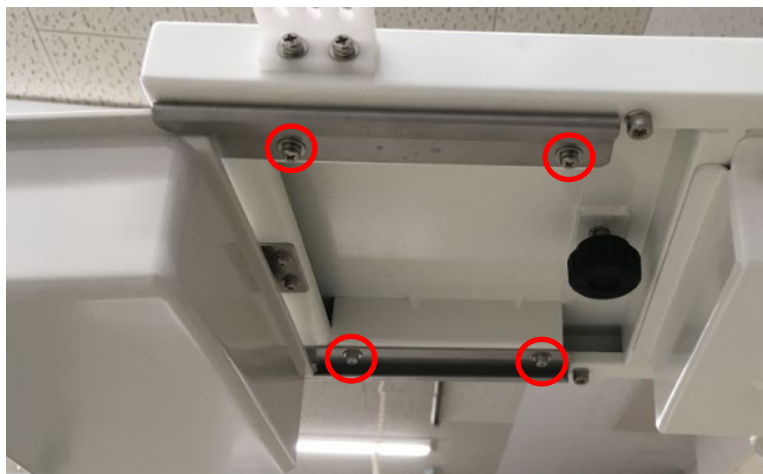
2-2 Remove the Handle



2-3 Remove the Tube Clamps



2-4 Remove the Drawer



2-5 Remove the Tube Holder



2-6 Remove the Castor



Adsorptive Apheresis Monitor

Adamonitor SC

WEEE Dismantle Instructions

MSCV-1-W-2

First Edition Issued on Jun, 6, 2018

5th Edition Issued on Feb, 17, 2022



CAUTION

1. Please note that the content in the operating instructions is subject to change without notice.
2. The software of device is copyrighted by Otsuka Electronics Co., Ltd. No individual parts or all of the software or the operating instructions can be used or reprinted without prior permission of Otsuka Electronics Co., Ltd.



Otsuka Electronics Co., Ltd.

3-26-3, Shodai-Tajika, Hirakata-shi, Osaka, 573-1132 , Japan